

Triolo

3 QUALITY
EFFICIENCY
DURABILITY

**HIGH CAPACITY
DUTY PUMPING**



HIGH-TORQUE+
✓ DRIVE READY



DUTY
+STRENGTH +PERFORMANCE

FZ-MH

HORIZONTAL MIXED FLOW PUMP

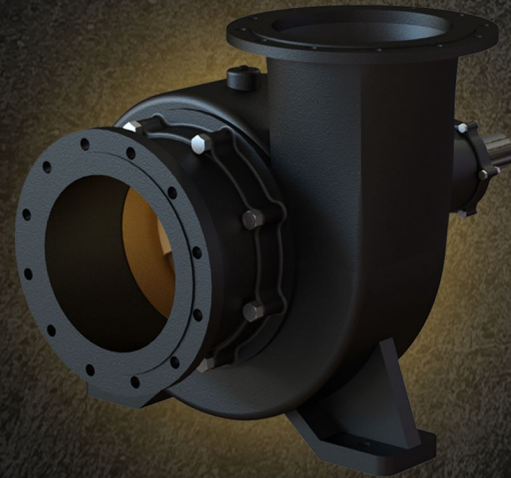
FZ-MH



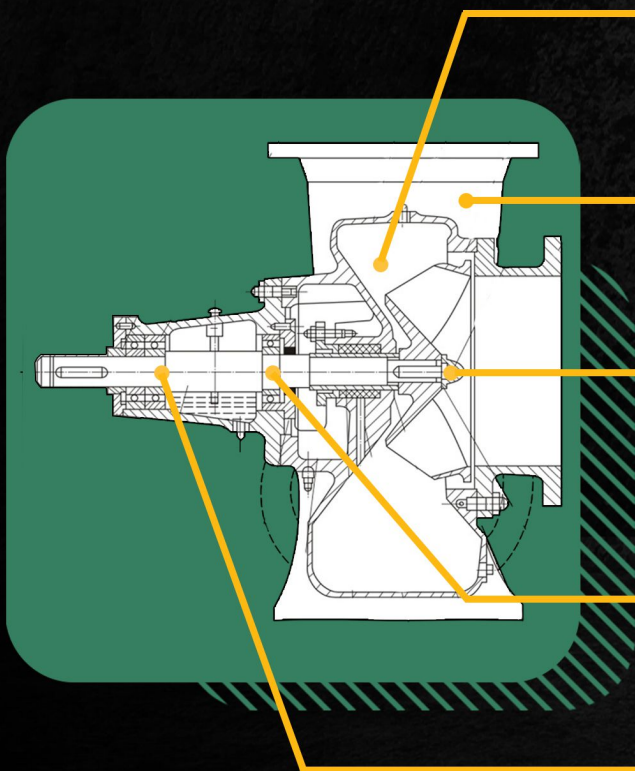
Model FZ-MH series pumps are single stage pumps with mixed flow impellers, and horizontal volutes, suitable for transporting pure water or other liquids with physical and chemical properties similar to water in large volumes. The liquid resistance can reach temperatures as high as 50 degrees celsius.

Technical Specifications

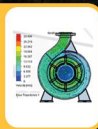
Capacity up to	L/s	2100
Head up to	m	20
Power up to	kW	400



Technology



1



PERFECT HYDRAULIC DISTRIBUTION

The Triolo pump has been engineered with FLOW simulation technology with the latest 3D CAD and has proven efficient hydraulic distribution.

2



NEW GENERATION PRECISION CASTING

Achieve the highest efficiency by using a new generation of precision casting technology. High pressure resistant pump

3



WIDE VANE-GAPPED IMPELLERS

Wide Vane Gapped Impellers have a large water channel for impeller resistance to solids and sediment.

4



HEAVY DUTY BEARING

For high durability and long longevity, the FZ-MH pump is equipped with heavy duty stainless steel bearings

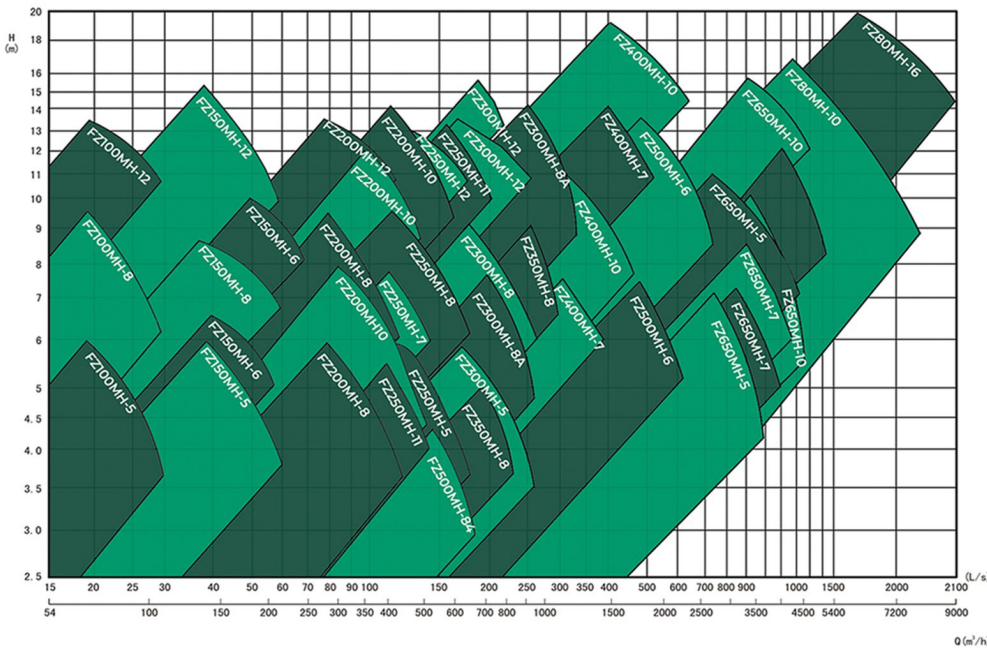
5



EASY MAINTENANCE

With its easy-to-remove structure and assembly, minimal parts, the FZ-MH series is easy to inspect and maintain.

Pump Curve



WIDE APPLICATION
✓ **RANGE READY**

Applications Sectors & Solutions

- Water Distribution & Boosting
- Industry Needs
- Flood Infrastructure
- Irrigation & Fertigation
- Commercial & Civil Building
- Mining
- Underground Drainage
- Cooling System
- Fire Fighting System
- Pond Irrigation
- Flood control

MOBILE FLOOD UNIT APPLICATIONS

GORDON
POWERING SOLUTIONS



**HIGH CAPACITY
MOBILE PUMPING**

Triolo

Designed for **PERFORMANCE**



+62 31-9914-3626



contact@triolo.co.id



WWW.TRIOLO.CO.ID



Jalan Darmo Permai Mayjen Yono Suwoyo
III no.36, Surabaya, Indonesia 60216